

Annual Report 2006

Annual Report and Accounts for the year ending 31 December 2006



IRELAND

General Information

Address:	33-41 Lower Mount Street Dublin 2 Tel: (00 353 1) 6146700 Fax: (00 353 1) 6146701 e-mail: info@creditunion.ie www.creditunion.ie
Auditors:	PricewaterhouseCoopers Wilton Place Dublin 2
Bankers:	Bank of Ireland Rathfarnham Shopping Centre Rathfarnham Dublin 14
Solicitors:	McCann FitzGerald 2 Harbourmaster Place International Financial Services Centre Dublin 1
Taxation Advisors:	PricewaterhouseCoopers Wilton Place Dublin 2

Contents

General Information	2
ILCU Board Meeting Attendance 2006	4
Organisation Chart	11
Joint Annual Report Foreword from ILCU PRESIDENT and ILCU CEO	13
Supervisory Committee's Report	21
Membership and Growth	26
Operational and Performance Review	27
Companies and Committees	65
Movement Statistics	81
Financial Statements	91

ILCU Board Meeting Attendance 2006



ILCU Board Photo

Back Row L to R: Arthur Finlay, Kevin Helferty, Liam O'Dwyer CEO, Jim O'Dwyer, Jimmy Johnston and Paddy O'Donnell Chairman Supervisory Committee

Middle Row L to R: Noel Madden, Mark Bailey, Rosemary O'Doherty, David Florida-James Supervisory Committee

Bottom Row L to R: Con O'Brien Treasurer, John Long, Anne O'Byrne President, Uel Adair Vice President, Gerry McGee and Carmel Dowling (not in picture – Brian McCrory, Supervisory Committee)

ILCU Board

Attendance Max. Poss. Attendance

A. O'Byrne, President	Blessington & District Credit Union Limited and Comhar Linn I.N.T.O. Credit Union Limited	14	14
S. Adair, Vice President	Waterside Credit Union Limited	14	14
C. O'Brien, Treasurer	Kilmallock Credit Union Limited	14	14
M. Bailey	Dunshaughlin Credit Union Limited	14	14
C. Dowling	Mitchelstown Credit Union Limited and Fermoy Credit Union Limited	14	13
A. Finlay	Athlone Credit Union Limited	14	14
K. Helferty	Lisburn Credit Union Limited	14	12
J. Johnstone	ASTI Credit Union Limited Fairview Credit Union Limited Rathfarnham Credit Union Limited	14	14

ILCU Board**Attendance
Max. Poss. Attendance**

J. Long	Killarney Credit Union Limited	14	13
N. Madden	Ballinasloe Credit Union (Our Lady of Lourdes) Limited	14	14
G. McGee	Mohill Credit Union Limited	14	13
R. O'Doherty	Derry Credit Union Limited Pennyburn Credit Union Limited	14	13
J. O'Dwyer	Law Library Credit Union Limited	14	13

Management Committee

A. O'Byrne, President
 S. Adair, Vice President
 C. O'Brien, Treasurer
 M. Bailey
 J. Johnstone
 L. O'Dwyer, CEO

8 meetings in 2006

Supervisors**Attendance
Max. Poss. Attendance**

B. McCrory	Belfast Teachers Credit Union Limited	14	12
D. Florida James, Secretary	Limavady Credit Union Limited	14	13
*P. O'Donnell, Chairperson	Longford Credit Union Limited	14	13

*Brian McCrory became chairperson in May 2006

ILCU Committees – Annual Report 2006

Management Committee

Anne O'Byrne	President, ILCU Board
Samuel Adair	Vice-President, ILCU Board
Con O'Brien	Treasurer, ILCU Board
Jimmy Johnstone	ILCU Board
Mark Bailey	ILCU Board
Liam O'Dwyer	ILCU CEO

Supervisory Committee

Brian McCrory	Chairperson
David Florida-James	Secretary
Paddy O'Donnell	Committee Member

Finance and Audit Committee

Con O'Brien	Chairperson, Treasurer, ILCU Board
Jimmy Johnstone	ILCU Board
Arthur Finlay	ILCU Board
Rosemary O'Doherty	ILCU Board

Administration Committee

Samuel Adair	Chairperson, Vice President, ILCU Board
Anne O'Byrne	President, ILCU Board
Carmel Dowling	ILCU Board
Gerry McGee	ILCU Board
Jim O'Dwyer	ILCU Board

Planning & Development Committee

Mark Bailey	Chairperson, ILCU Board
Kevin Helferty	ILCU Board
John Long	ILCU Board
Noel Madden	ILCU Board

Legislation Committee

Noel Madden	Chairperson, ILCU Board
Mark Bailey	Secretary, ILCU Board
Samuel Adair	Vice-President, ILCU Board
Carmel Dowling	ILCU Board
Arthur Finlay	ILCU Board
Rosemary O'Doherty	ILCU Board

Insurance Committee

Kevin Helferty	Chairperson, ILCU Board
Con O'Brien	Treasurer, ILCU Board
Jimmy Johnstone	ILCU Board
John Long	ILCU Board
Gerry McGee	ILCU Board
Jim O'Dwyer	ILCU Board

Standing Orders Committee

John Curran	Chairperson, Letterkenny Credit Union Limited
Joe Sheridan	Castleblayney Credit Union Limited
James Kevin	Monasterevan Credit Union Limited
Jim O'Connell	Douglas Credit Union Limited

Nominating Committee

Michael Gormely	Westport Credit Union Limited
John O'Connor	St Ailbe's Credit Union Limited
Patsy Turbitt	Moyenir Credit Union Limited

SPS Working Group

Carmel Dowling	Chairperson, ILCU Board
Kevin Helferty	ILCU Board
Con O'Brien	Treasurer, ILCU Board
Jim O'Dwyer	ILCU Board
Pat Fay	LCU Head of Monitoring (retired October 2006)
John O'Halloran	ILCU Head of Legal & Secretariat

Credit Union Focus Editorial Committee

Mark Bailey	ILCU Board
Carmel Dowling	ILCU Board

Northern Ireland Committee

Samuel Adair	Chairperson	Vice-President, ILCU Board
Patricia Kerr	Chapter 1	Pennyburn Credit Union Limited
William Breen	Chapter 2	Larne Credit Union Limited
Liam McCullagh	Chapter 3	Camlin Credit Union Limited
Shelagh Murphy	Chapter 4	Kilkeel Credit Union Limited
Pat Donnelly	Chapter 17	Fintona Credit Union Limited

National Technology Committee

Jimmy Johnstone	Chairperson, ILCU Board
Donal Enright	Monaleen Credit Union Limited
Joan Maguire	CC Corca Dhuibhne Limited
John Mullen	Thurles Credit Union Limited
Fran Thompson	Dunshaughlin Credit Union Limited
Liam O'Dwyer	ILCU, CEO
Charles McLaughlin	ILCU, Head of IT

Co-operation/Rationalisation Committee

Kathleen Prendergast	Chairperson, Tipperary Credit Union Ltd	South East Region
Carmel Dowling	ILCU Board	
Kevin Helferty	ILCU Board	
Pat Fay	ILCU Head of Monitoring (retired October 2006)	
Ciaran Bishop	ILCU Business Unit Manager	
Eilis Brennan	Belfast Teachers' Credit Union Limited	Northern Region
Billy Carroll	Ballinrobe Credit Union Limited	Western Region
Jim Kearney	Baltinglass Credit Union Limited	Eastern Region
Tony Cullinan	St. Francis Credit Union Limited	South West Region
Brendan Cotter	Credit Union Managers Association	
Pat Coughlan	Institute of Credit Co-operative Administration	
Olivia McCarthy	University College Cork	
Peter Goth	Queens University	

Capital Policy Task Team

Samuel Adair	Vice-President, ILCU Board
Gerry McGee	ILCU Board
Selina Gilleece	A.S.T.I. Credit Union Limited
Brendan Jackson	Newry Credit Union Limited
Finbarr McCarthy	Consultant
Pat Fay	ILCU Head of Monitoring (retired October 2006)
Brian Daly	ILCU Head of Monitoring

ECCU User Group

Con O'Brien	Chairperson	Treasurer, ILCU Board
Kathleen Halpin	Clonmel Credit Union Limited	South East Region
Columba Gorman	Monaghan Credit Union Limited	Eastern Region
Deborah Gorman	Newry Credit Union Limited	Northern Region
Tom O'Connor	Portumna & District Credit Union Ltd	Western Region
John O'Regan	Clanmaurice Credit Union Limited	South West Region
Mary Griffin	Inchicore & District Credit Union	Dublin

National Youth Committee

John Long	Chairperson, ILCU Board
Anne-Marie Coffey	Enfield Credit Union
Catherine Coffey	Killarney Credit Union
Martin Cumiskey	Crossmaglen Credit Union
Julie Ferguson	Ballymena Credit Union
Noreen Greene	Rowlagh Credit Union
Declan Wall	St. Canice's Credit Union

Pension Trustees

Republic of Ireland (to December 2006)

Michael O'Callaghan	Chairperson, ILCU Board Nominated Pension Trustee
Jimmy Johnstone	ILCU Board, Nominated Pension Trustee (resigned February 2006)
Carmel Dowing	ILCU Board Nominated Pension Trustee (from February 2006)
Matt Heffernan	Member Nominated Pension Trustee
Irish Pensions Trust	Professional Trustee, ILCU Board, Nominated Trustee
Tommy Owens	Member Nominated Pension Trustee

Republic of Ireland (from December 2006)

Carmel Dowing	Chairperson, ILCU Board, Nominated Pension Trustee
Matt Heffernan	Member Nominated Pension Trustee
Garrett Dwyer	Member Nominated Pension Trustee
Irish Pensions Trust	Professional Trustee, ILCU Board Nominated Trustee

Northern Ireland

Samuel Adair	Chairperson, Vice-President, ILCU Board Nominated Trustee
Kevin Helferty	ILCU Board, Nominated Trustee
Mary Kelly	Member Nominated Pension Trustee
Helen Kivelehan	Member Nominated Pension Trustee
Eilis Morgan	ILCU Board Nominated Pension Trustee

Wholly-Owned Associated Companies

ECCU Assurance Company Limited

Eilis Morgan	Chairperson
Brian Mulholland	Secretary
Harry Allen	(Elected June 2006)
John Deegan	(Co-opted August 2006)
Norman Dodds	(Elected June 2006)
Cecil Donovan	
Denis P O'Leary	
Seamus O'Shea	(Retired December 2005)
Lauri Healy	(Retired June 2006)
Seamus Flanagan	(Retired June 2006)

ILCU Holdings Limited

Mark Bailey	Chairperson, ILCU Board
Fiona Cullen	Secretary, ILCU Staff
Carmel Dowling	ILCU Board
Kevin Helferty	ILCU Board

ILCU International Development Foundation Limited

Tommy Weir	Chairperson
Margaret Byrne	Secretary, ILCU Staff
Anne O'Byrne	President, ILCU Board
Samuel Adair	Vice-President, ILCU Board
Con O'Brien	Treasurer, ILCU Board (until July 2006)
Gerry Thompson	
Gerry McGee	ILCU Board (from July 2006)

ILCU Savings Protection Company Limited

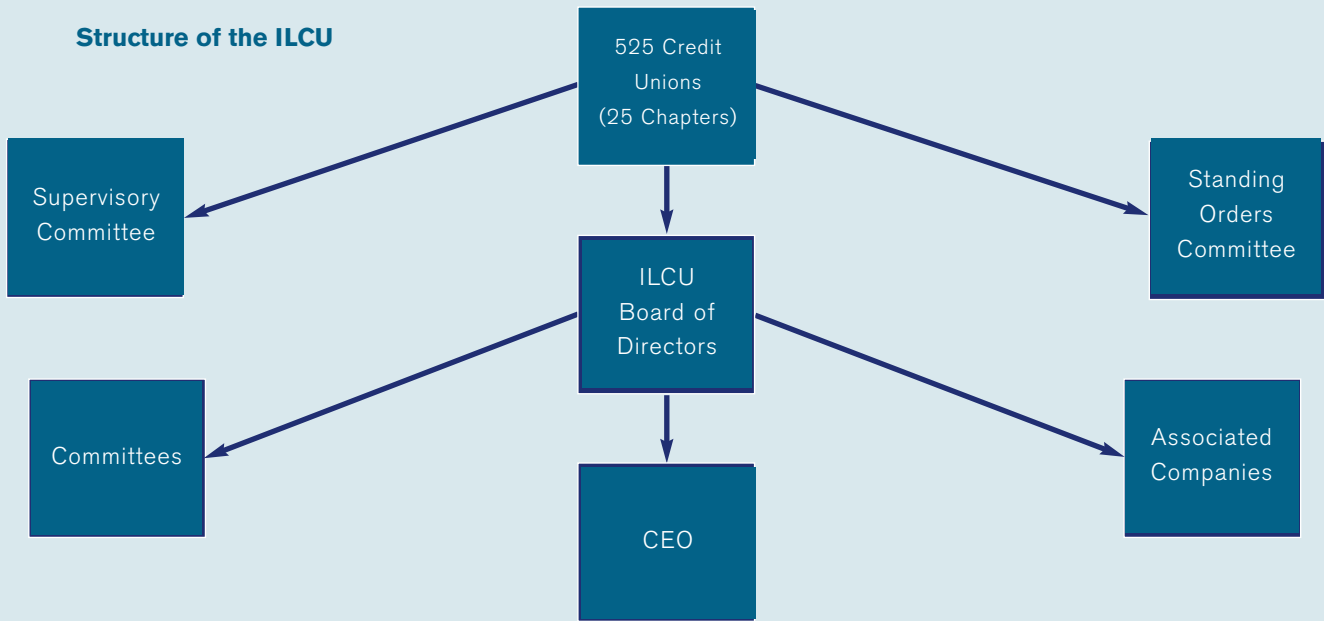
Kevin Helferty	Chairperson, ILCU Board
Mark Bailey	ILCU Board
Jimmy Johnstone	ILCU Board
Margaret Byrne	Secretary, ILCU Staff

Organisation Chart



Organisation Chart

Structure of the ILCU



Management Structure of the ILCU Office

